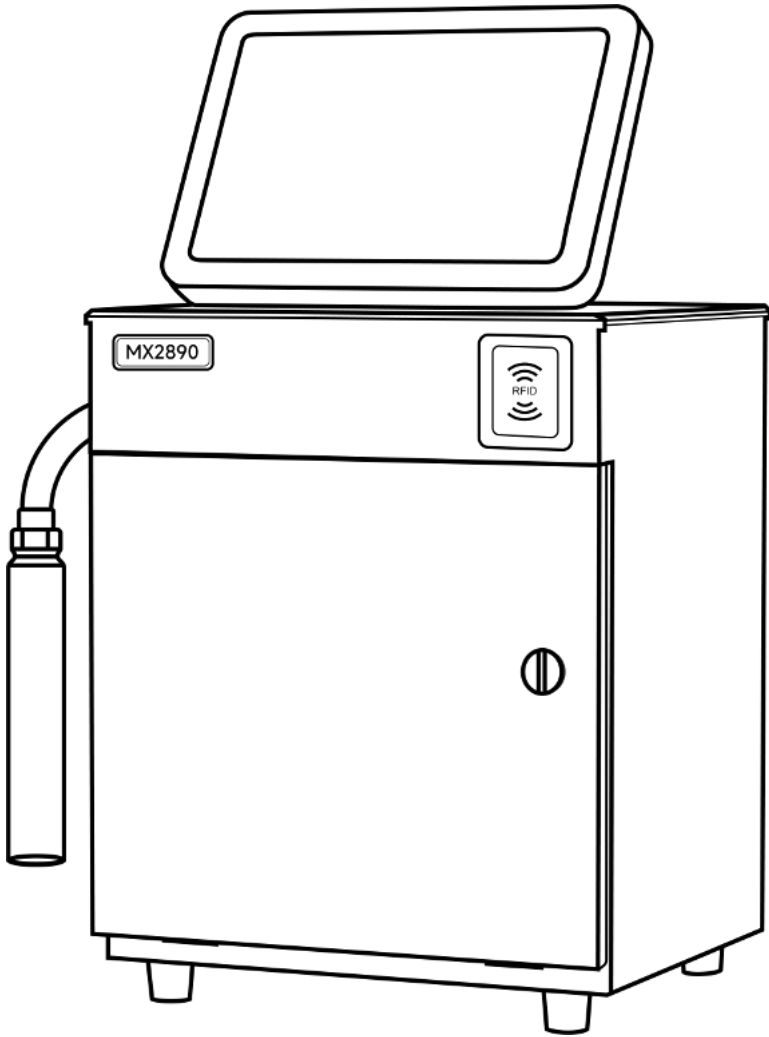


MX2890 Continuous Inkjet Printer

USER MANUAL



CONTENT

1. Safety Information	1
1.1 Introduction	1
1.2 General safety guidelines	1
1.3 Instructions for use	1
2. OPERATION	2
2.1 How to turn on the inkjet printer	2
2.2 User interface introduction	2
2.3 How to select files to print	4
2.4 Faults and warnings	4
2.5 How to Start Printing	4
2.6 To Stop Printing and Power Off the Inkjet Printer	4
3.Editing	5
3.1 How to create a new print file	5
3.2 How to edit print information	7
3.3 How to edit, delete, rename, and copy saved print files	14
4. Tools	16
4.1 Printing settings	16
4.2 Tools	17
4.3 Login	23

1. Safety Information

1.1 Introduction

The purpose of this inkjet printer is to print information on products. Using this device for other purposes may result in serious personal injury or product failure.

1.2 General safety guidelines

- ◆ Please do not use other power adapters without permission, otherwise it may damage the machine or cause serious safety accidents; · Before using the machine, please check whether all cables are damaged, otherwise it may cause safety accidents;
- ◆ Do not expose the machine to excessive heat sources, strong light, loud noises or similar environments;
- ◆ Try to use official encoders, photoelectric eyes and other accessories. If you need to bring your own accessories, please make sure they meet the relevant electrical characteristics requirements;
- ◆ Try to avoid storing or using this machine in a dusty environment;
- ◆ Do not store or use this machine in an excessively humid environment.

1.3 Instructions for use

- ◆ Use officially certified inks and solvents;
- ◆ Do not unplug or plug in any accessories or cables while the power is on, otherwise the machine may be damaged;
- ◆ When cleaning the machine, to avoid damaging the printer components, please only use a soft brush and lint-free cloth for cleaning. Do not use high-pressure air, waste cotton, or rough tools. Keep away from water and do not use non-certified chemical solvents for cleaning.

1.3.1 Emergency treatment plan

In case of emergencies such as smoke from the printer, uncontrollable continuous printing, fire, explosion sounds, etc., please disconnect the power supply immediately and turn off the equipment.

1.3.2 Product warranty

Quality Assurance: The entire machine is guaranteed for 12 months from the date of the bill of lading. This warranty does not apply to problems caused by misuse, modification or improper use.

The following situations are not covered by the warranty:

1. Use any non-officially certified ink or solvent, and disassemble or modify the product without approval.
2. Accidents caused by natural disasters, storage or transportation conditions, such as (but not limited to) falling.
3. Damage caused by spraying with water or other liquids.
4. Machine damage caused by using unapproved, wrong or unstable power supply.

2. OPERATION

2.1 How to turn on the inkjet printer

Follow these steps to turn on the printer:

1. Perform a visual inspection to ensure all connections are secure and cables are connected correctly.
2. Make sure the main power cable is connected.
3. Press the power switch on the left side of the back of the printer
4. After the inkjet printer is successfully started, the user operation interface will be displayed on the screen.

2.2 User interface introduction

The user interface is a button-based control system. It has an easy-to-use touch screen, and most of the display is active. All technical aspects of printer setup and control are done via tool buttons.

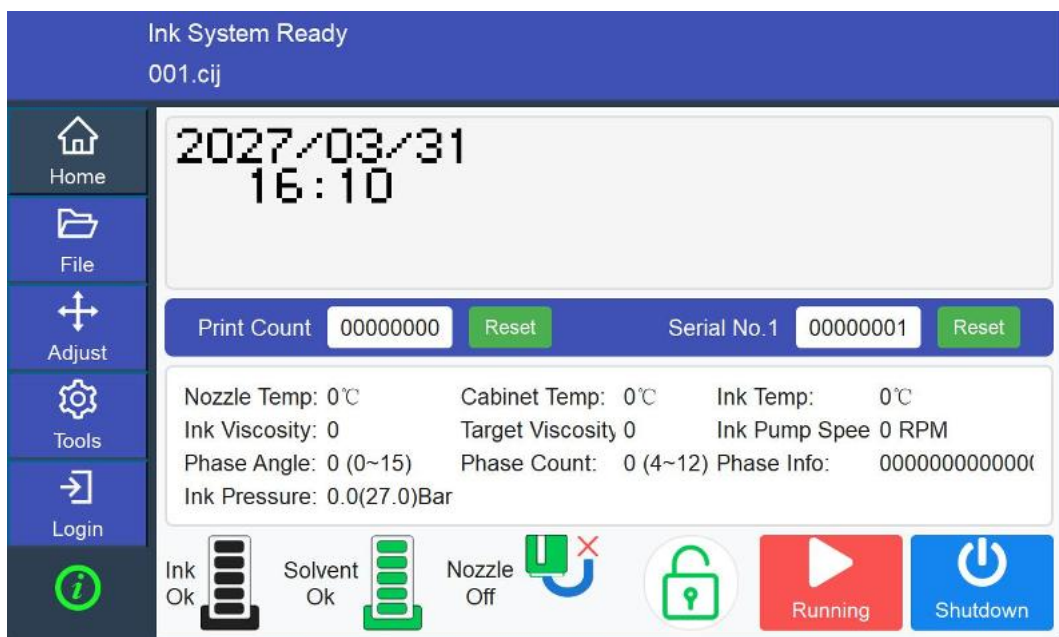


Figure 2-1 Home page interface

The running status area of the inkjet printer displays the current working status of the inkjet printer.

Ink supply not yet: The printer has been powered on, but ink supply has not been started.

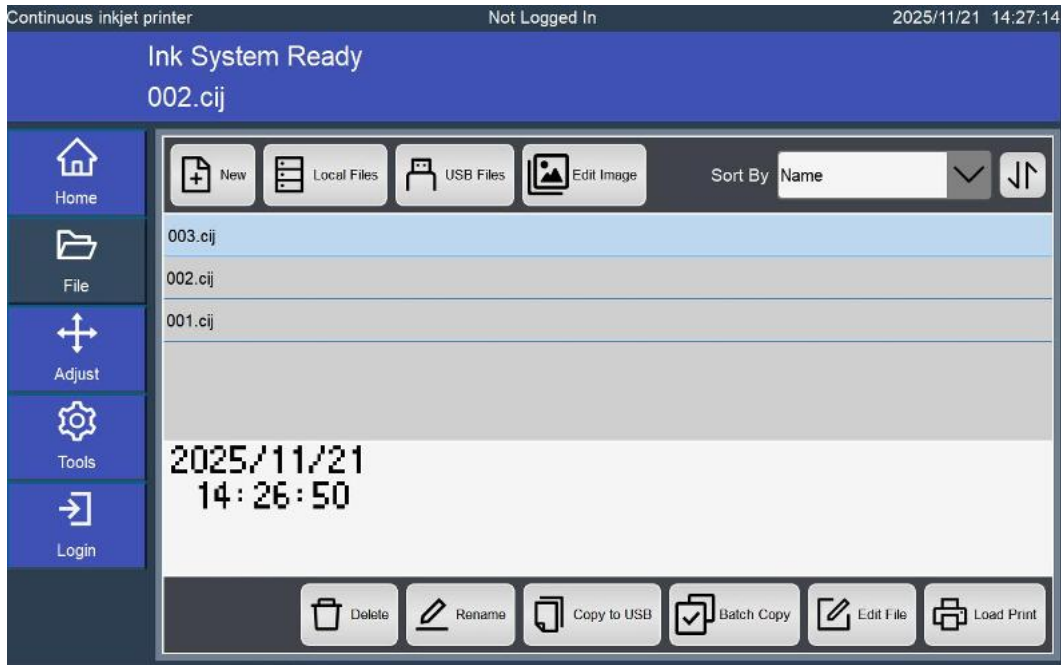
- ◆ Ready: The printer has completed ink supply and is ready for printing.
- ◆ Printing: The printer is printing.
- ◆ Yellow warning: The operator should be aware of the warning before the printer stops printing.
- ◆ Red fault: The operator should eliminate the fault before the printer starts printing.

Icon	Name	Description
	home	Displays machine running status information, loaded file content, total print count, batch print count, and pieces/minute information.
	file	Operate files, such as: create new files, open local files, USB disk files, delete, rename, copy, edit, load and print files, etc.
	Adjust	Set printing style and counting settings.
	Tool	Use functional tools to set the machine's operating status, including ink path maintenance, system settings, factory mode, system logs and other tools.
	Log in	Set user roles with different permissions and enter password to log in.
	"i"	Machine operating status information. For example, nozzle temperature, chassis temperature, ink path pressure, ink pump speed, ink viscosity, mixing tank level, and ink temperature.
	Consumables level	Displays ink/solvent level
	Running	open the nozzle seal and move the retractor to its designated position.
	Shutdown	Stop printing, seal the nozzle, and turn off the display screen.
	Nozzle on	nozzle opens, and the retractor moves to the set position (at the lowest part of the printhead)
	Nozzle off	nozzle is sealed, and the retractor moves to the set position (for nozzle sealing)

2.3 How to select files to print



1. Click the button **Select Job** on the main interface and select the name from the file displayed in the middle of the screen



2. After selecting the required file, a content preview of the job will be displayed on the lower side of the screen. (As shown in Figure 2-2)



3. Click the button **Print** system returns to the main interface and waits for operator instructions.

2.4 Faults and warnings

When a fault occurs, the printer will pop up a fault message at the top of the screen.

2.5 How to Start Printing



When the status bar shows "Printing," begin printing.

2.6 To Stop Printing and Power Off the Inkjet Printer



Click the button **Shutdown**, wait for the inkjet retractor to move to its set position (at the nozzle). the operator may leave after the printer screen turned off.

3.Editing

3.1 How to create a new print file


This chapter introduces three ways of creating new print files, namely

- ① Use the "New" function.
- ② Use the "Local File" function.
- ③ Use the "U disk file" function.

You can use these three methods to enter the file editing interface. The specific steps will be introduced below.

3.1.1 Use the 'new' function



1.Click the  button Select Job on the main interface enter the file to processing interface.As shown in Figure 3-1

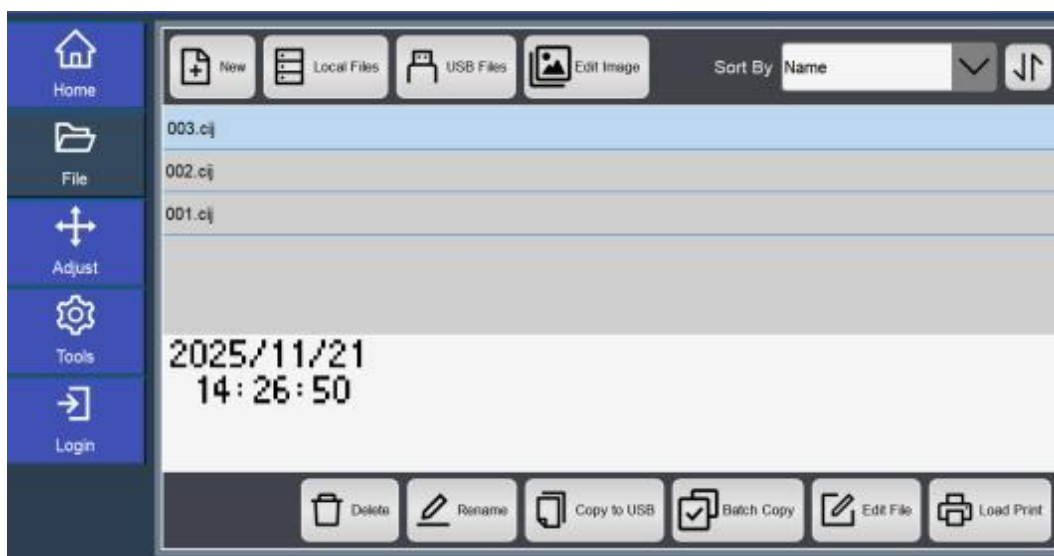


Figure 3-1 File processing interface

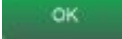



2.Click the  on the file processing interface, and the interface shown in Figure 3-2 will pop up.



Figure 3-2 File processing interface

After selecting the file type and editing as needed, you can click  to save the file or click  to give up saving, and the system will return to the file processing interface; click  and the system will return to the home page.

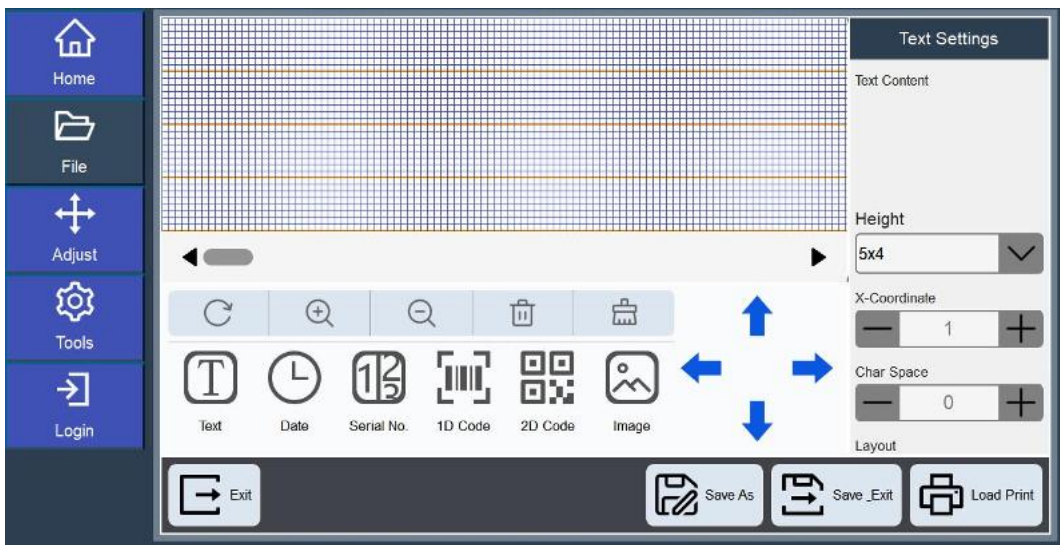


Figure 3-3 File editing interface

3.1.2 Use the "Local File" and "U Disk File" functions



1. Click  or , the system will display a list of file names in the local computer and USB flash drive. As shown in Figure 3-4 file list interface.



Figure 3-4 File list interface

2. After selecting the required files, you can delete, rename, copy to local, edit files, and load for printing.

3.2 How to edit print information

This chapter explains how to edit different print

1. Follow the three methods in Section 3.1 to enter the system into the file editing interface. As shown in Figure 3-5 (the picture shows the file editing interface entered using the "New" function and the content selected to be edited is text type)

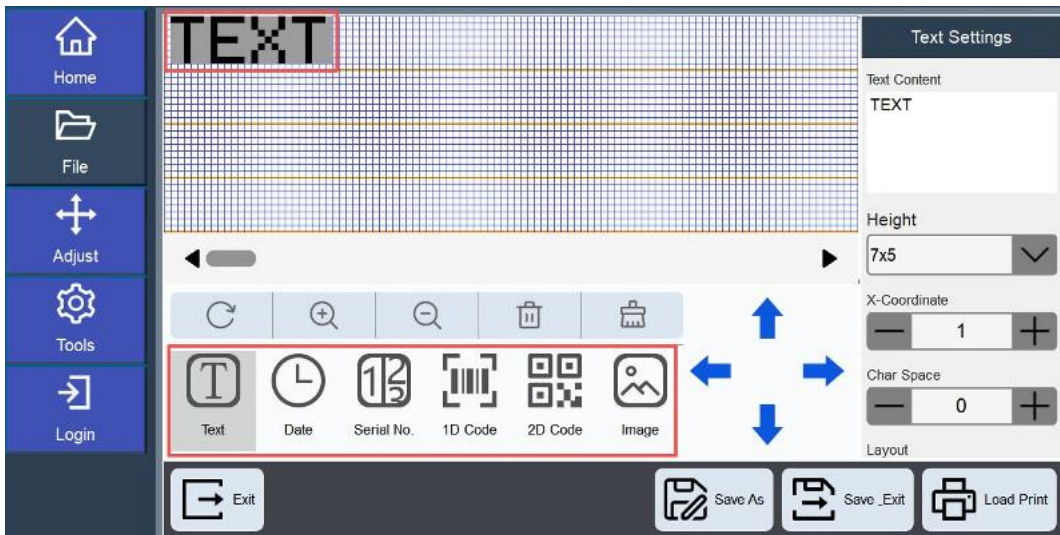
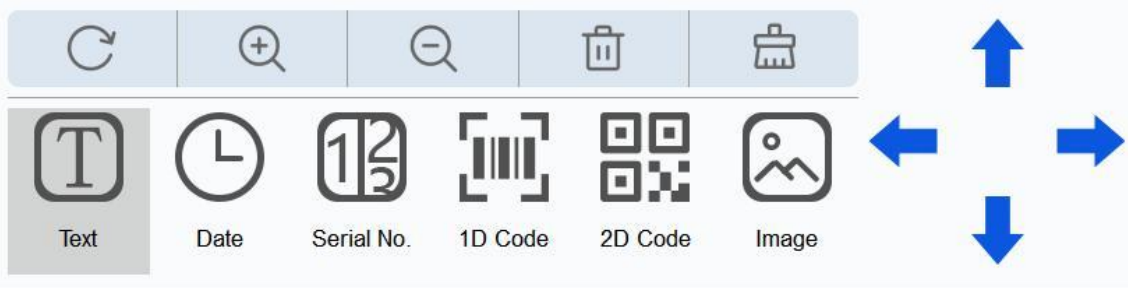





Figure 3-5 File editing interface

2. In the file editing interface, you can edit print information. The content of the printed information can include "text", "time", "serial number", "one-dimensional code", "QR code", and "picture".



ICON	DESCRIPTION
	Delete the information content specified in the editing area
	Delete all information content in the editing area
	Adjust the position of the information according to the direction of the arrow

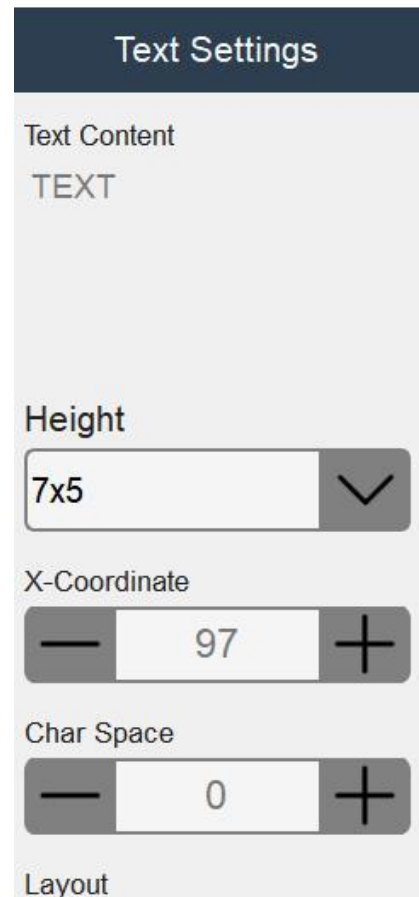
3.2.1 Text editing

1. If you need to print Chinese characters, English, numbers, symbols, etc., please click the button in the "information button Area", and a default text entry will appear in the "information Editing Area". Click the content box in the "information Attribute Area", and in the pop-up Enter the required information on the key board, As shown in Figure 3-6.



Figure 3-6 Text editing interface

2. In "Text Property Settings", you can adjust the character type (English or Chinese), font, word spacing and layout of the text entry.



3.2.2 Time editor

1. If you want to print variable time, that is, the time content in the printed information is automatic all up



dated without human intervention, please click the button Date in the "information Button Area". and a default time entry will appear in the "information Editing Area". As shown in Figure 3-7. Supports real-time change of variable time information. in the printing state, the time information is updated in real time.

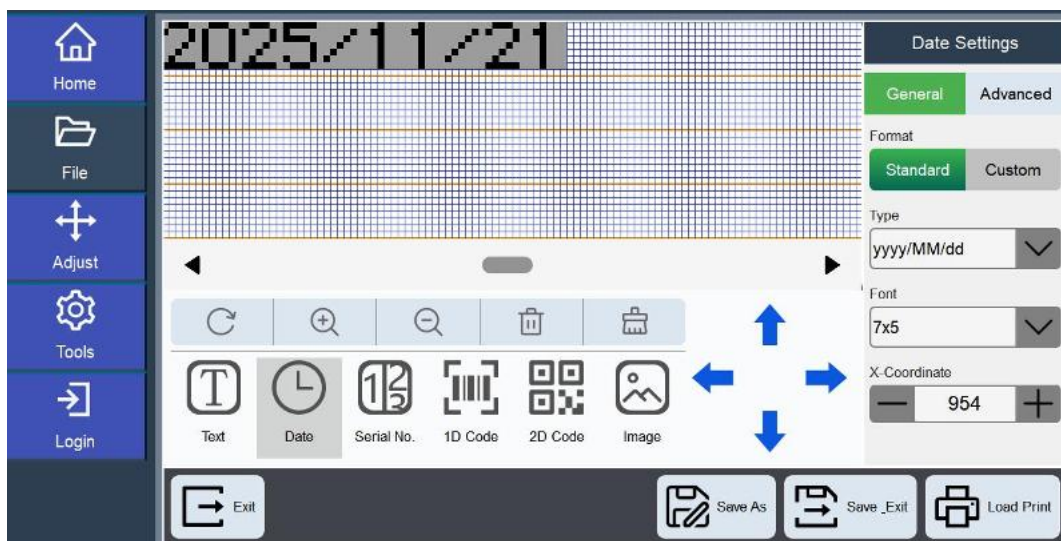
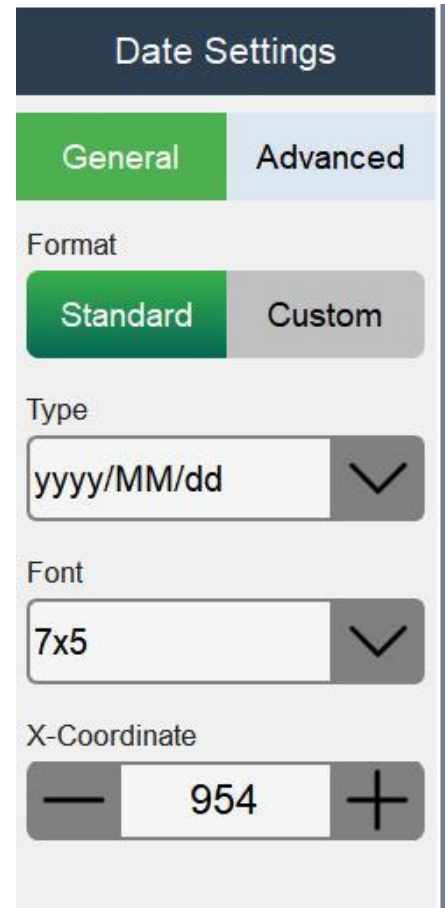


Figure 3-7 Time editing interface

2. In "Date Attribute Settings", you can set the date type, font and expiry date.



3.2.3 Serial number editing

1.If you need to print a variable serial number, that is, the count content in the printed information is



automatically updated without human intervention, please click the button in the "Information Button Area", and a default serial number entry will appear in the "Information Editing Area".As shown in Figure 3-8

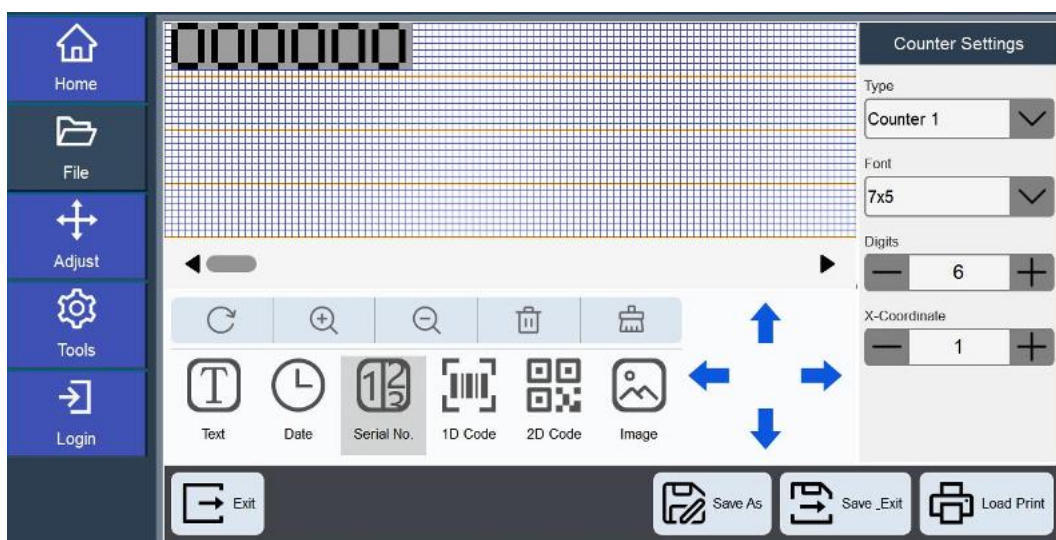
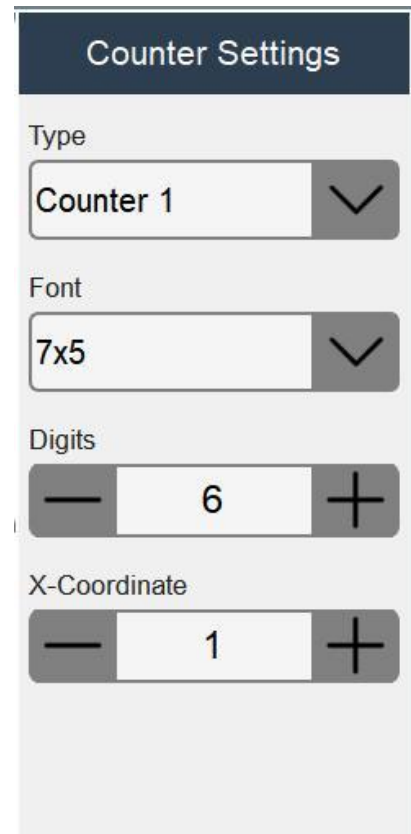


Figure 3-8 Serial number editing interface

2. In the "Counter Property Settings" option, you can select the counter type and font.
3. The inkjet printer system contains two counters, namely "Counter 1" and "Counter 2". The maximum number of counters is 8.



3.2.4 One-dimensional code editing

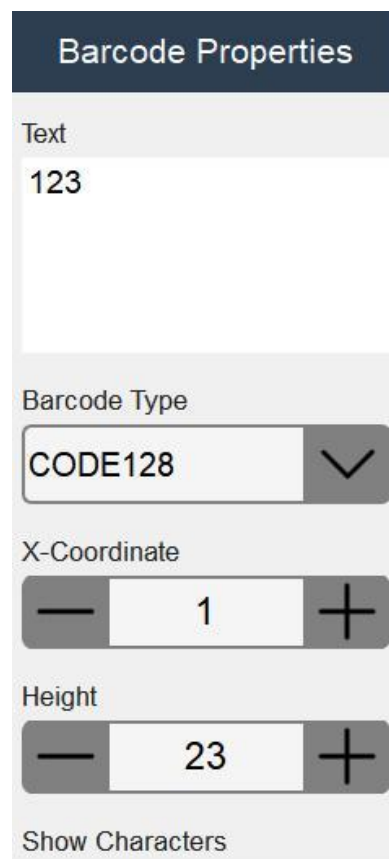


1. If you need to print a one-dimensional code, please click the button and a default one-dimensional code will appear in the "information Editing Area", as shown in Figure 3-9



Figure 3-9 One-dimensional code editing interface

2. In the "Barcode Attribute Settings" option, you can set the text content, barcode type, and barcode height of the one-dimensional code.



3.2.5 QR code editing

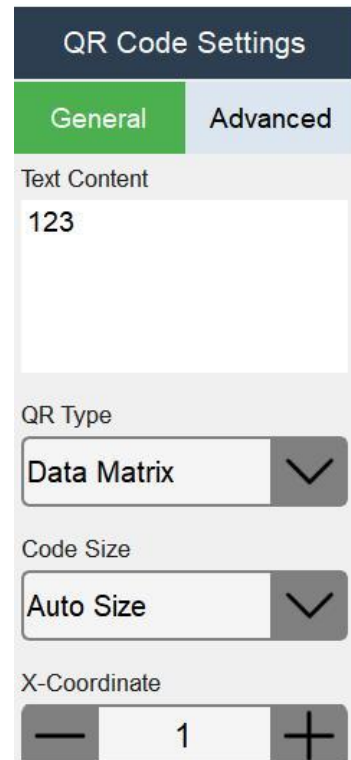
1. If you need to print a QR code, please click the button!

and a default QR code will appear in the "Information Editing Area", as shown in Figure 3-10.



Figure 3-10 File editing interface

2. In the "QR code attribute settings" option, you can set the text content of the QR code, the QR code type, the barcode size, and the error correction level.



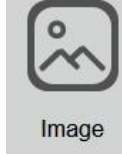
3.2.6 picture editing

1. If you need to print a picture, please click the button "Information Editing Area", as shown in Figure 3-11 and a default picture will appear in the.

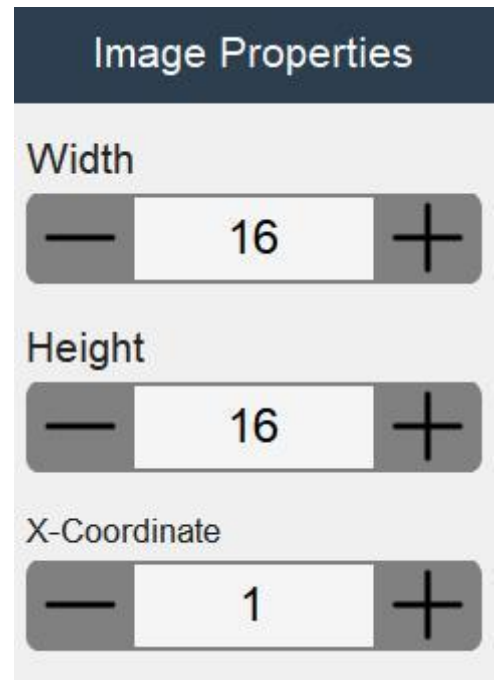


Figure 3-11 Image editing interface

2. In the "Picture Property Settings" option, you can set the



width and height of the picture, and click on the picture file that needs to be printed.



3.3 How to edit, delete, rename, and copy saved print files

This chapter introduces how to edit, delete, rename, and copy saved print files. The directories of saved print files are divided into local files and USB disk files.

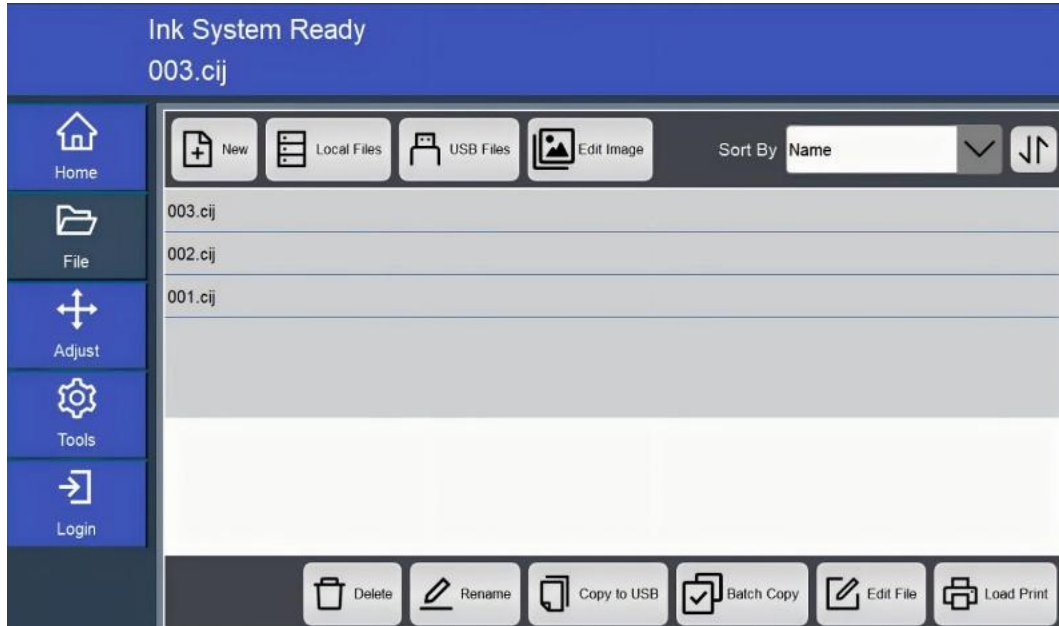


Figure 3-12 File list interface

3.3.1 Edit files

1. Select the file to be edited in the file list and click the "Edit File" button. The system will enter the file editing interface and display the information content of the file in the information editing area.

2. Select the information to edit and modify it. After the modification is completed, click the "Save and Exit" button, and the system will return to the file list interface, where you can select other files to continue modification.

3.3.2 Delete files

Select the file to be deleted in the file list and click the Delete button. The system will prompt "After deleting the file, it cannot be restored. Are you sure to execute it?" As shown in Figure 3-13.

click the "OK" button to delete it.

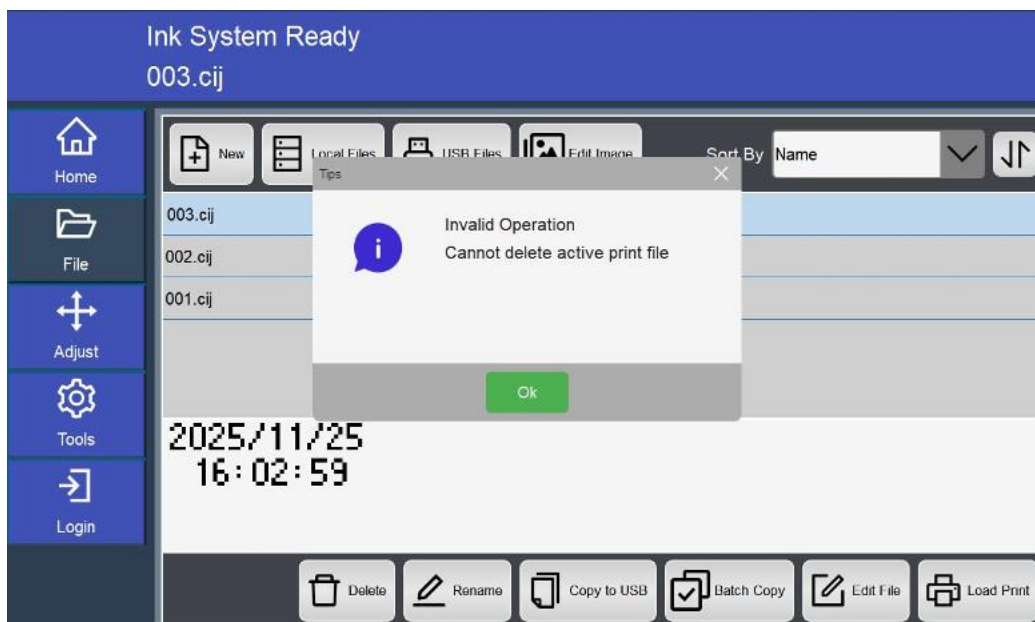


Figure 3-13 Confirm deletion prompt box interface

3.3.3 Rename files

Select the file that needs to be renamed in the file list and click the "Rename" button. The system will switch to the new file name input box, as shown in Figure 3-14. "Enter the new file name and click the "OK" button to complete the rename. name.

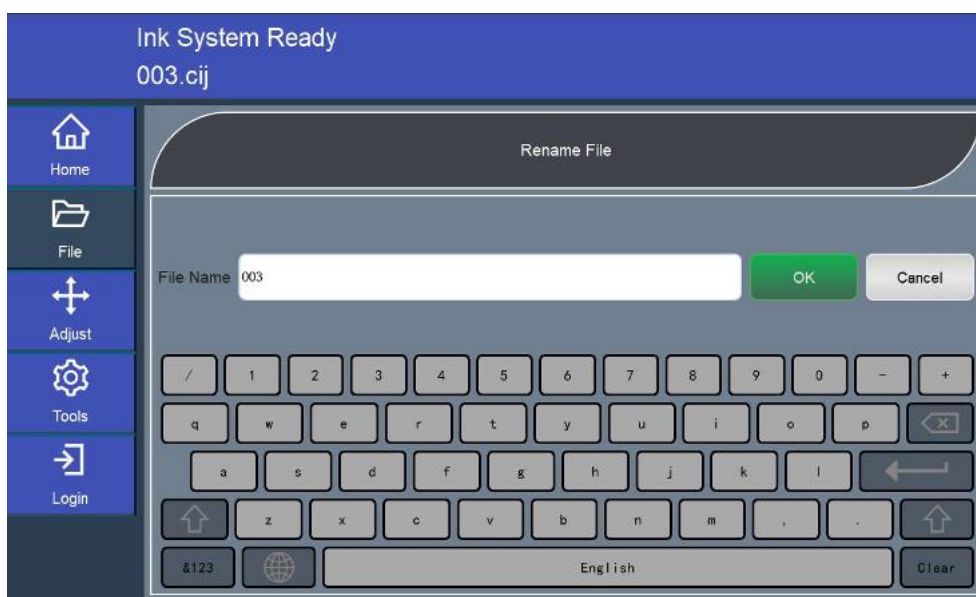


Figure 3-14 Renaming file prompt interface

3.3.4 Copy files

Select the file to be copied in the file list and click "Export to USB" to copy the local file to the U disk. Click "Export to local" to copy the U disk file to the local computer

4. Tools

4.1 Printing settings

Printing style includes common parameters and style settings for basic printing.

4.1.1 General parameters

The general parameter interface is shown in Figure 4-1, including the print direction, print dots, character width, gray, printing delay, character height and compression height. Users can print according to the Setup is required.

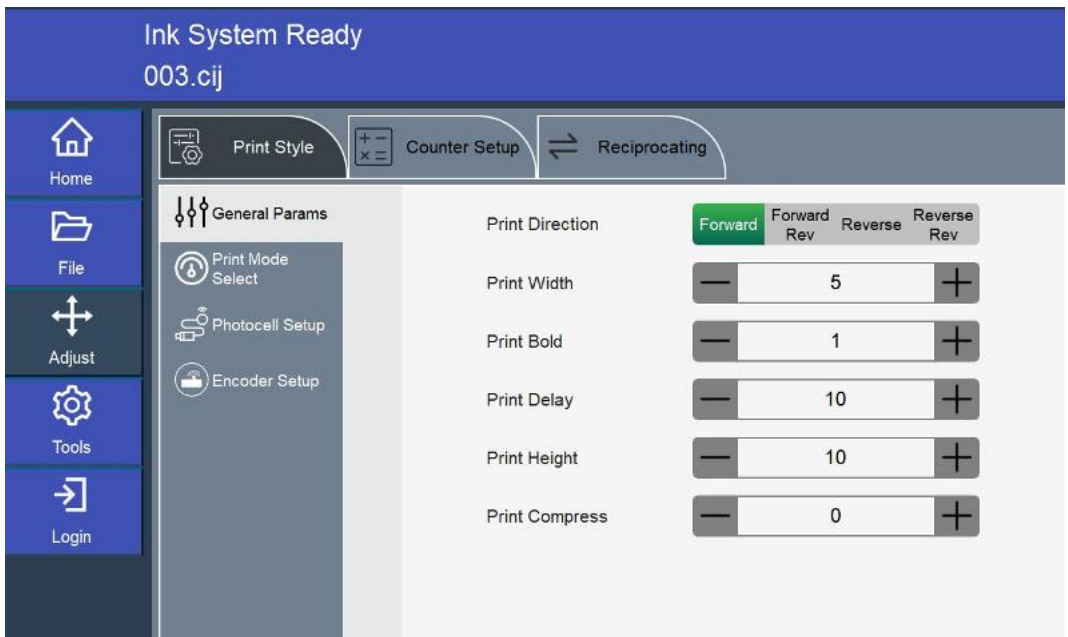


Figure 4-1 General parameter interface

4.1.2 Reciprocating Printing

The interface for reciprocating printing is shown in Figure 4-2. Users can select either forward or reverse printing based on inkjet requirements, and adjust the printing delay, number of prints, and printing interval as needed.

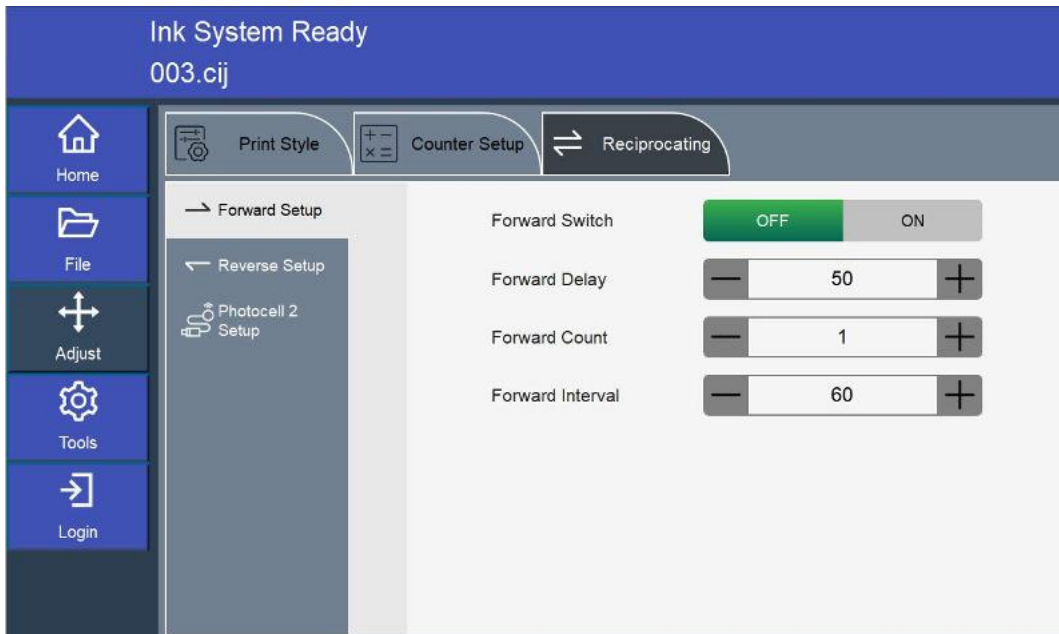


Figure 4-2 reciprocating printing

4.1.3 Counting settings

The counting setting interface is shown in Figure 4-3. The system contains two counters, "Counter 1" and "Counter 2". You can set the current value, step value, initial value, and end value of the count, and you can use the "Product Count" "Reset the current batch print count and total print count.

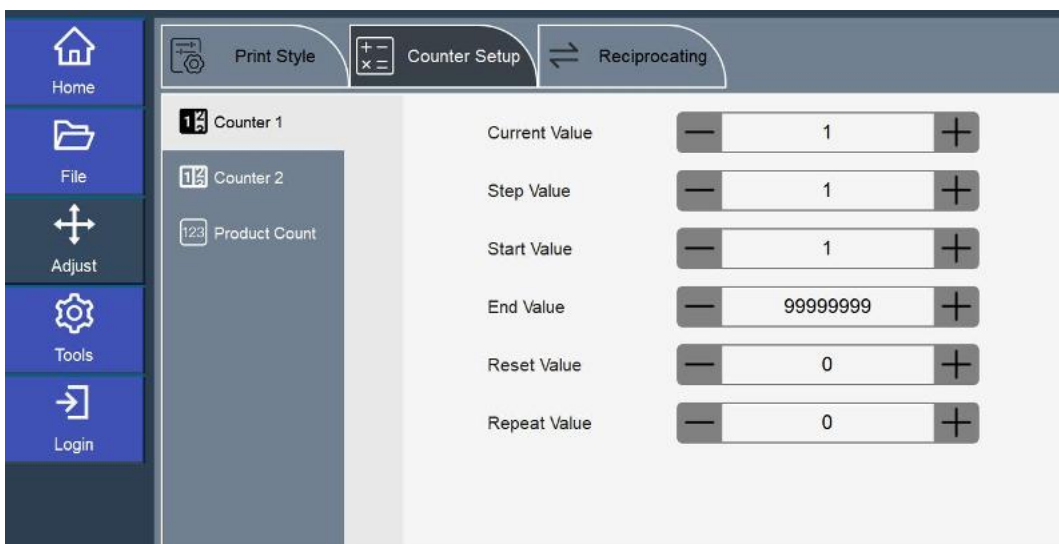


Figure4-3 counting settings

4.2 Tools

The tool module includes four major functions: ink path maintenance, system configuration, factory mode and system log. It is mainly a tool for professional technicians to configure machine parameters, debug, maintain, and repair the printer. The interface is shown in Figure 4-4.

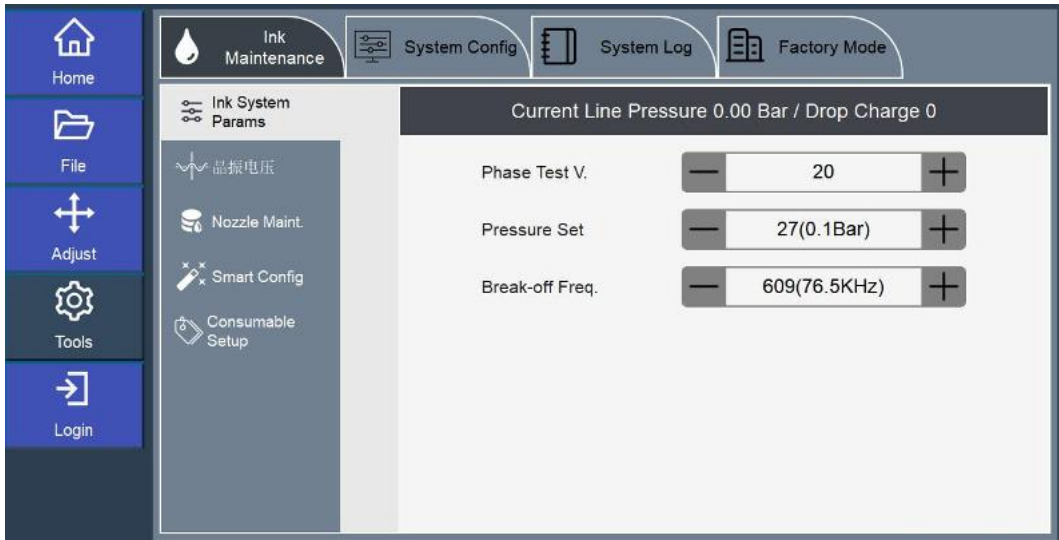


Figure 4-4 tool interface

4.2.1 Ink path maintenance

Ink path maintenance includes three modules: ink path parameters, nozzle maintenance, and automatic ink stop setting

4.2.1.1 Ink parameters

The ink path parameter interface is shown in Figure 4-8. Technicians can view the current ink path pressure value, view and adjust phase voltage, modulation voltage, pressure setting, viscosity setting and drop frequency.

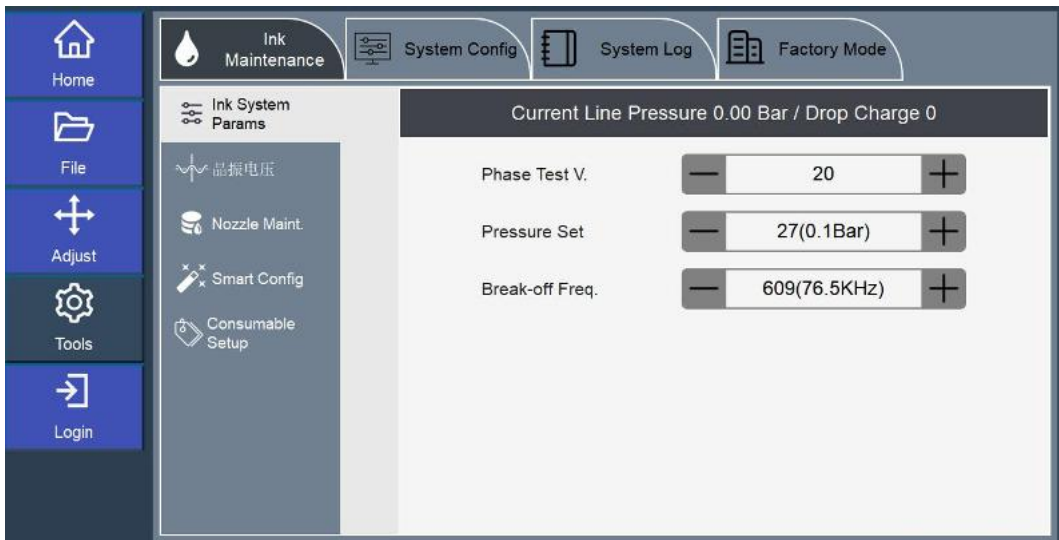


Figure 4-5 Ink parameters

4.2.1.2 Nozzle maintenance

the nozzle maintenance interface is Show in Figure 4-6.professional technicians turn on the nozzle opening and cleaning switches for nozzle failures.

- 1.When the nozzle is clogged or the ink line position deviates, use the nozzle opening function to effectively clear the nozzle.
- 2.When the nozzle cleaning is turned on, negative pressure is generated at the nozzle. Flushing then ozzle with cleaning agent can effectively clean the nozzle.

3. In order to ensure good printing effect, please keep the charging electrode and high-voltage board free of ink residue after cleaning, Please let it sit for 1 minute before printing.

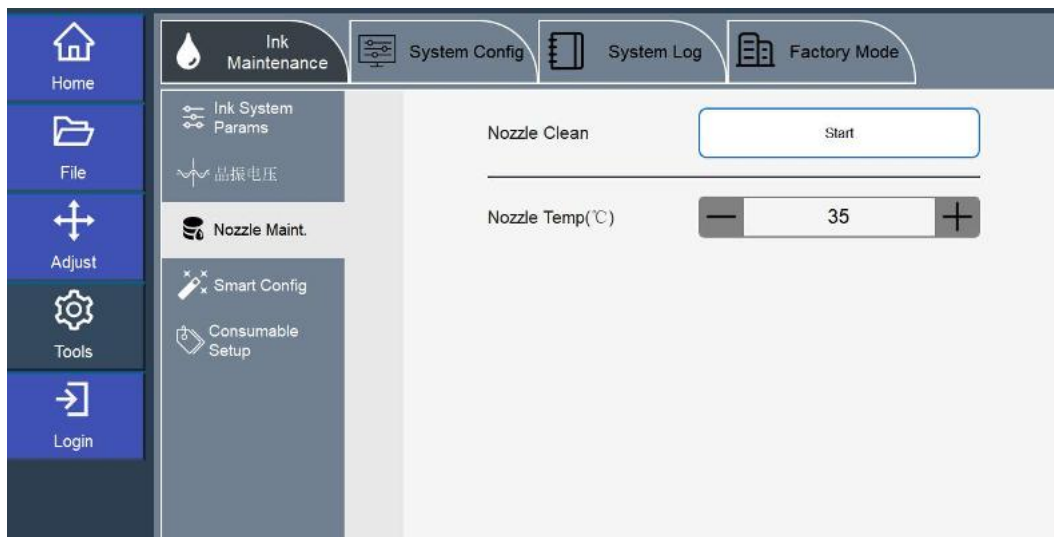


Figure 4-6 nozzle maintenance interface

4.2.1.3 Automatic parameter

The automatic parameters setting interface is shown in Figure 4-10. Professional technicians can turn on and off the automatic ink stop when recycling failure, the nozzle sleeve printing ink switch, and the automatic ink viscosity setting switch.

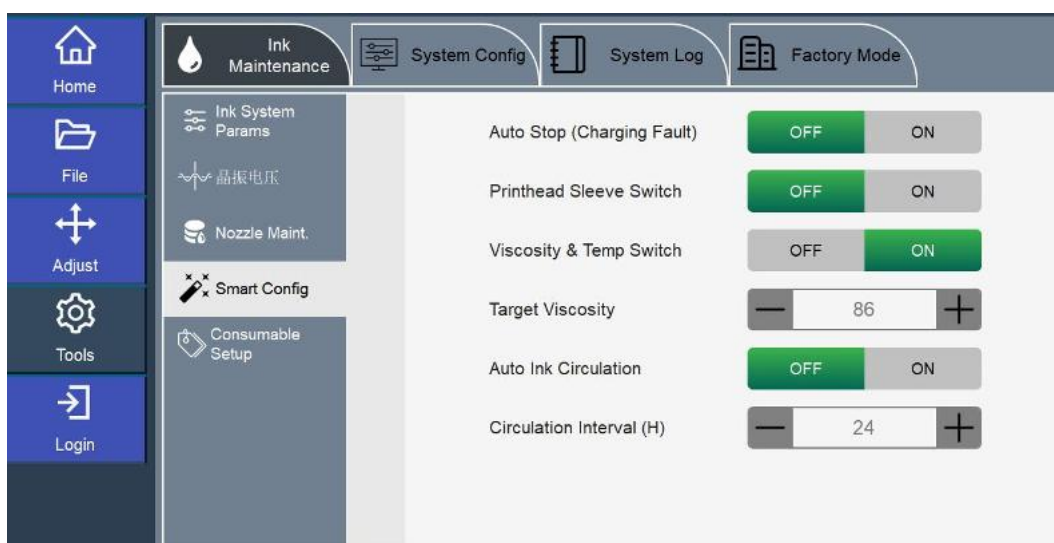


Figure 4-7 automatic parameter setting interface

4.2.2 System info

System ink distribution includes two functions: localization and system upgrade.

4.2.2.1 Local settings

The localization interface is shown in Figure 4-8. Users can adjust the system language, time, and screen saver time as needed.

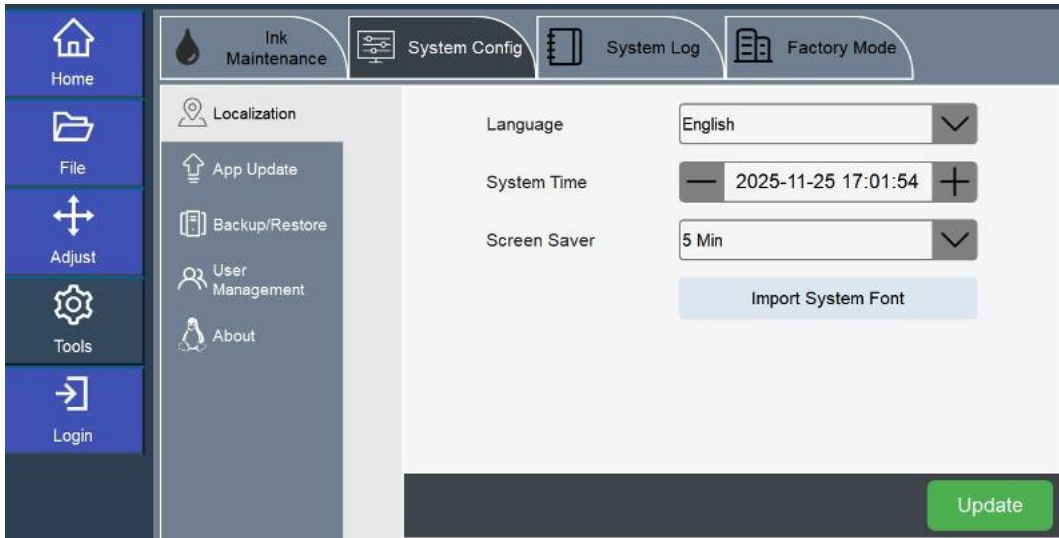


Figure4-8 localization settings

4.2.2.2 App upgrade

The system upgrade interface is shown in Figure 4-9. Users can view the current software version and upgrade the system through USB devices as needed.

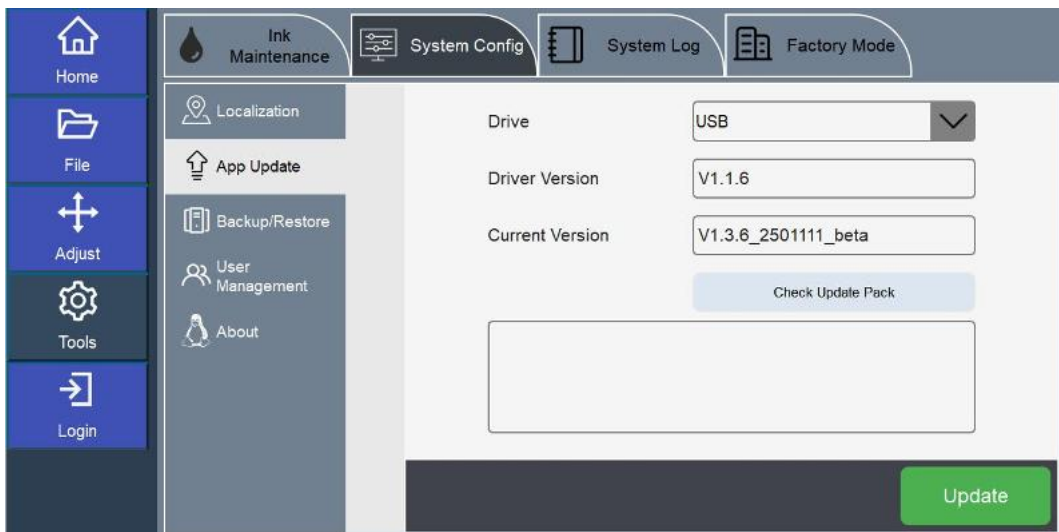


Figure 4-9 System upgrade interface

4.2.2.3 User management

The user management interface is shown in Figure 4-10, where user permissions and login passwords can be set.



Figure 4-10 user management interface

4.2.3 Systems logs

System logs include event logs, ink operation logs, and fault logs.

4.2.3.1 Event logs

The event log interface is shown in Figure 4-11, which records the operation records of the inkjet printer during operation.



Figure 4-11 event logs interface

4.2.3.2 Run logs

The ink path operation log interface is shown in Figure 4-12. The ink viscosity, ink pump speed and pressure of the inkjet printer are recorded every 10 minutes

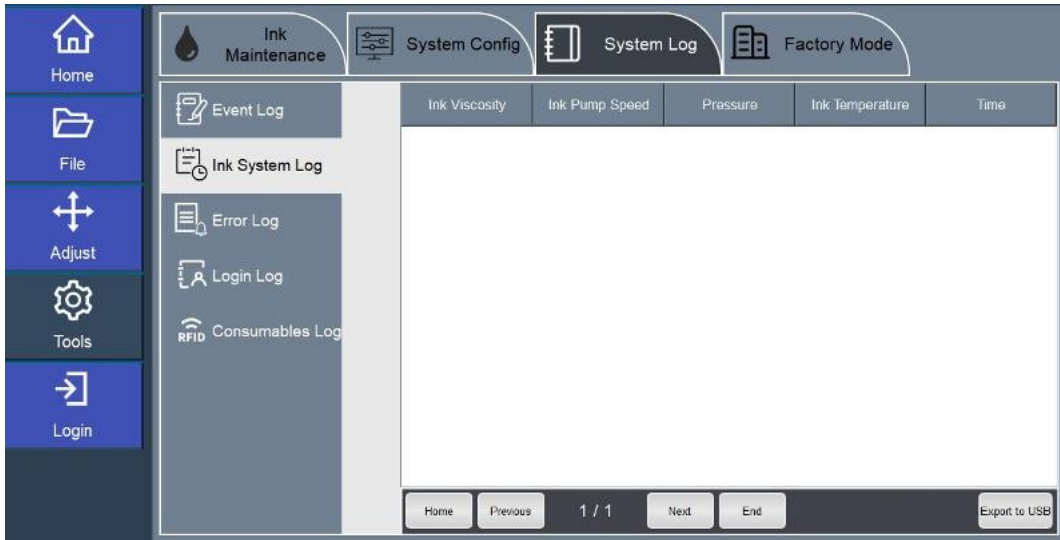


Figure 4-12 run logs interface

4.2.3.3 Fault log

The fault log interface is shown in Figure 4-13, which records printer faults.

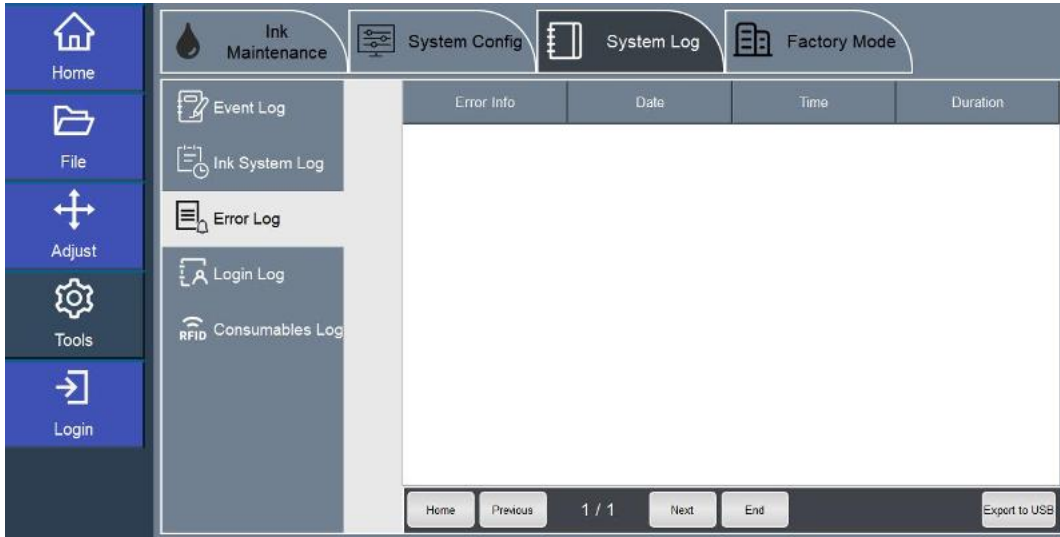


Figure 4-13 fault log

4.2.4 Factory mode

Factory mode includes four modules: single-step debugging, maintenance.

4.2.4.1 Single-step debugging

The debugging interface is shown in Figure 4-14. When professional technicians debug the machine, they can manually switch each control valve of the printer to achieve testing inspection maintenance etc.

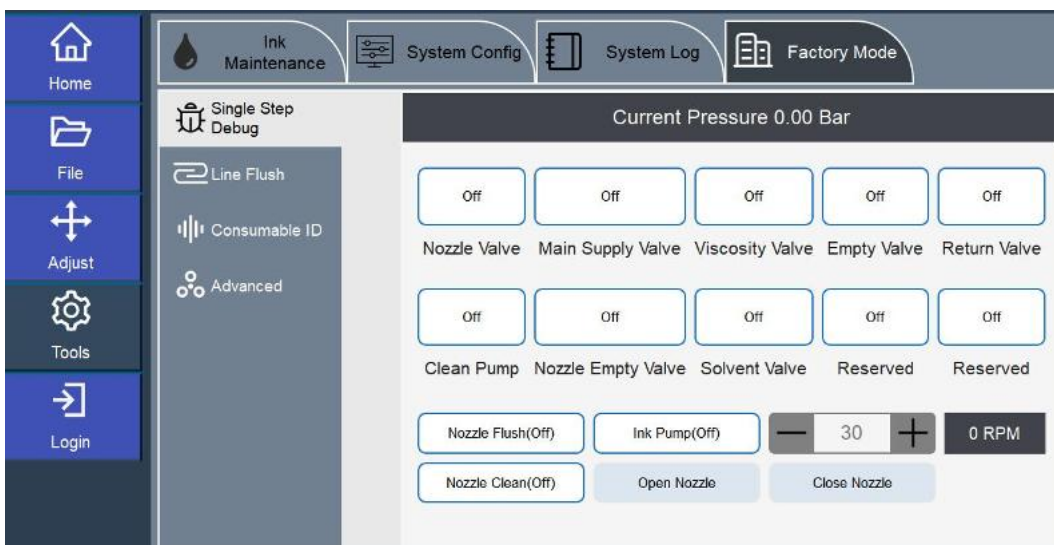


Figure 4-14 Single-Step Debugging Interface

4.3 Login

Click the "Login" button, and the system will enter the user login interface as shown in Figure 4-15 The system has three roles: operator, advanced operator and administrator. Each with different permissions and can set their own passwords. After selecting the user role, enter the set password to log in.

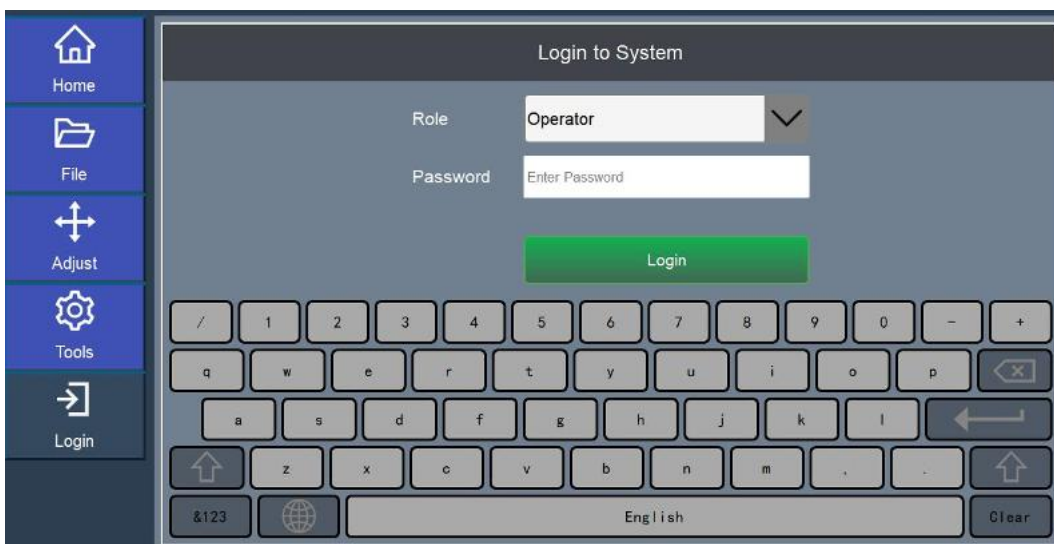


Figure 4-15 interface